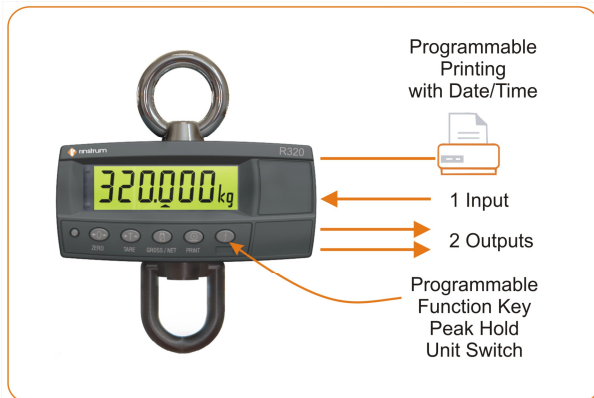


H Scale – Data Sheet



- 300kg (700lb) or 150kg (350lb)
- Live Weigh Functionality
- Trade approved indicator
- Safety rated and positive locked fittings
- Weather resistant housing
- Built in clock calendar and versatile power options
- Peak Hold or Unit Switching

The H series hanging scales combine the proven R320 indicator with an S cell in an extended enclosure creating a compact trade approved sling scale – ideal for a wide range of weighing applications from tea, flour to steel merchants, recycling and competition fishing - applications that require suspended weighing.

Peak hold functionality makes for an excellent load testing, cable pulling or tension device. Pivoting mount arrangement makes swivelling the assembly and load simple. Physical features:

- Stainless steel load cell, hook and eyes
- Dust and water tight (IP65 rated), increasing reliability and unit lifetime.
- Protective lens over the LCD to reduce risk of damage from knocks
- Long life rechargeable battery options ideal for mobile applications.

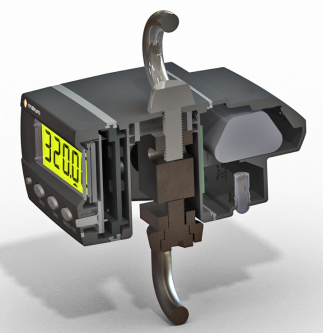
Built in communications and outputs:

- **Built in RS232** communications port for connection to printer or PC
- **Two outputs** – isolated high side driver up to 300mA

Ideal for trade approved applications:

- Programmable function key – Unit switching, Counting, Manual Hold, Peak Hold, Live Weigh
- **Configurable printing** combined with the **clock calendar** allow for traceable dockets to be printed.
- **Live weigh** functionality for weighing animals.
- **High performance** based on a trade approved indicator

Smart Weighing



Built to last

- Safety rated fittings
- Positive locked fittings for safety and security
- Weather resistant housing
- Pivoting mount arrangement makes swivelling the assembly and load simple.

..now that's smart weighing.

H Scale Specification Table

Product	HS-A					
Pattern Approval (Australia)	NMI 6/13/3 3,000d					
Component Approvals						
R320 Indicator	K302: 4,000d @ 0.8µV/d NMI (S-420), OIML R76					
	K303: 10,000d III/III L NTEP 08-072					
	EN 60601-1-2: 2007 Medical					
Load Cell	OIML C3 300kg					
	C-Tick, CE & FCC					
Capacity	HS150A		HS300A			
	kg	150	0.05			
	lb	350	0.10			
			Range 1	Range 2		
		kg	300	0.10	150	0.05
		lb	700	0.20	500	0.10
Materials						
Hooks/Eyes	316 Stainless Steel					
Load Cell	Stainless Steel					
Indicator	ABS					
IP Rating	IP65					
Net Weight	3kg (6.6lb)					
Indicator	R320					
Repeatability	+/- 1 division					
Linearity	+/- 1 division					
Display	LED Backlit LCD with six 20mm (0.8") high digits with units and annunciators					
Keypad	6 key silicon keypad					
Power Source						
DC	7 to 24VDC, 4.8, 9.6, 12 and 24V batteries (2.5 VA max) ON/OFF key with memory feature					
AC	AC plug pack Input: 110/240VAC 50/60Hz Output: 12VDC 1.5A					
Battery	2.5Ah 12V NiMH rechargeable battery pack with IP65 boot Or 4 x AA batteries (Recommend rechargeable NiMH, NiCad, etc.)					
Ambient Temp	-10 to +50 °C (14° to 122° F)					
Serial Output	RS-232 automatic transmit, network or printer outputs. Transmission rate: 2400, 4800 or 9600 baud					
Set points	2					
Assignable Function Key	1					
Input/Outputs	2 Outputs - isolated transistor drive outputs (up to 300mA each at 50VDC) 1 Input					
Functions	Unit switching, counting, manual hold, peak hold, configurable printing and totalizing					
Accessories	Glove to protect scale from knocks					

Specifications are subject to variation for improvement, without notice Illustrations are indications only and variation may be evident between products

